

Jan C. Scow Consulting Arborists, LLC

Disease and Pest Diagnosis, Hazard Evaluation, Restorative Pruning Advice, Value Assessment

401 N. Ventura St.
Ojai, CA 93023
(805) 272-8095

11/23/21

Matt Cooper
Matt Goodwin
Carp Bluff, LLC
1415 N Cahuenga Blvd
Los Angeles, CA 93013

SUBJECT: Tree Inventory at 5885 Carpinteria Ave.

REFERENCE: Proposal for Tree Inventory, dated 10/25/21, Scow

BACKGROUND: I was retained to provide an inventory of all qualifying trees at the subject site in accordance with the referenced proposal. I visited the site on 11/16/21 and completed an inventory of all qualifying trees on the property¹.

ASSIGNMENT: I agreed to do the following work:

Gather the following information:

Tamarisk (Tamarix sp.)

- 1) Numerically tag² each tree with at least one trunk greater than 8" trunk diameter
- 2) Estimate trunk diameter(s) of each tree tagged
- 3) Give approximate location (locate by geographic areas on aerial map)

Other species:

- 1) Identify species
- 2) Numerically tag each tree greater than 8" trunk diameter or multiple trunks at least two > 6" diameter
- 3) Measure trunk diameter(s)
- 4) Assess condition (good/fair/poor)
- 5) Map locations on aerial maps

¹ There were some situations where I was unable to determine if a tree was on the property or on an adjacent property. These trees were noted as questionable in the "Comments" section of the inventory.

² All tree tags have colored ribbons attached to them for enhanced visibility, except trees on the north end of the driving range.

Create the following work product:

- 1) 8 ½ x 11" Aerial maps showing tree locations and/or groupings of trees
- 2) Excel spreadsheet listing data for individual trees by tag number and approximate locations.
- 3) Brief memo summarizing findings.

OBSERVATIONS: I noted a total of 144 trees on (or possibly on) the property. Of the total trees, there were 85 tamarisk trees (*Tamarix sp.*), 34 blue gums (*Eucalyptus globulus*), 9 western sycamore (*Platanus racemosa*), 4 Monterey cypress (*Hesperocyparis macrocarpa*), and 12 various other species. Of the total number of 144 trees, 100 were considered to be in "poor" condition, including approximately half of the blue gums and most of the tamarisk. Information regarding condition for each tree can be found in the tree inventory, sent as a separate email attachment. Below I have discussed some general observations by tree species.

SPECIES

Tamarisk- The tamarisk trees form a screen or "windbreak" along the west side of the property, and to a lesser extent, along the north end of the east side. These trees are a jumbled mess, as they are probably fairly old, and have a tendency to have chaotic multiple trunks and branches. Many have fallen but continue to grow. Others are standing dead trees or fallen dead trees (neither are included in the inventory). None of the trees are particularly attractive, healthy, or structurally sound. In some cases, they may actually not be on the property, but without property lines clearly staked it was hard to tell for sure. These trees were all mapped in groupings rather than by individual tree locations. This is a non-native species that is considered to be invasive in some habitat types.

Blue gum- These Eucalyptus trees are in various locations, but most of them are along the western edge of the property (specific locations can be determined by looking at the aerial maps in conjunction with the inventory data). About half of these trees were considered to be in poor condition, with the remainder being in fair or good (2 trees) condition. Some of them are quite large trees. Many, perhaps most, have significant structural issues, including several along the west side that have been repeatedly topped due to being below high voltage lines. This is a non-native species that is considered to be invasive in some habitat types.

Western sycamore- These 9 trees are all located on the north end of the property and appear to be in good condition overall. Most of them are along the front of the property near Carpinteria Ave. This is a native species in the region, although these trees were clearly planted.

Monterey cypress- These 4 trees are located on the southern half of the site. The trees are young and they are in fair to very good condition. This species is

native in some northern coastal regions of California, but is not considered to be locally native. It seems very well adapted to the local area.

Miscellaneous other species- Other species found in low numbers include non-native Hollywood junipers (2), Arbutus (2), acacia, and (one each) peach, *Myoporum*, ash, and Mexican fan palm. California natives, but not locally native, include Catalina ironwood (2) and a California fan palm. None of these trees are remarkable.

MAPPING

The areas and general tree locations are all indicated on the five attached area maps as illustrated below. The final map shows the approximate boundaries of each area on the property.

Map	Map page #	Individual trees	Area	Trees within area
NE corner	1	134-144	1	1-9
SE corner	2	10,11,13-17	—	—
SW corner	3	18-20	2	21-36
W edge	4	12	3	37-46
“	“	—	4	47-58
W edge, NW corner	4 & 5	—	5	59-126
NW corner	5	127-133	—	—
Entire property	6	—	—	—

DATA SHEETS

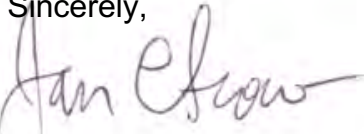
Data is collected in an Excel spreadsheet, sent as a separate email attachment, listing the following attributes:

- 1) No tag (a few trees could not be tagged)
- 2) Tree #
- 3) Species
- 4) Common name
- 5) DSH [trunk diameter(s) measured or estimated at 4 ½ feet or as indicated]
- 6) Condition (very good, good, fair, poor, very poor)
- 7) Map (map sheet on which the tree is located)
- 8) Location (general location on the map sheet where tree is located)
- 9) Comments

Data can be sorted as needed. (To return to original order, sort by tree number).

Please let us know if we can be of any further assistance or if you have any additional questions. Our goal is to satisfy our clients and help them to better care for their trees in the most effective way possible. We look forward to working with you toward that goal!

Sincerely,



Jan C. Scow
ASCA Registered Consulting Arborist #382
ISA Board Certified Master Arborist #WE-1972B



Attached:

- 1) Photos
- 2) Map Sheets 1-6
- 3) By separate email: Field data sheet (Excel)

Photo showing general condition of tamarisk trees



Monterey cypress #17 south of tracks



Eucalyptus trees in Area 4

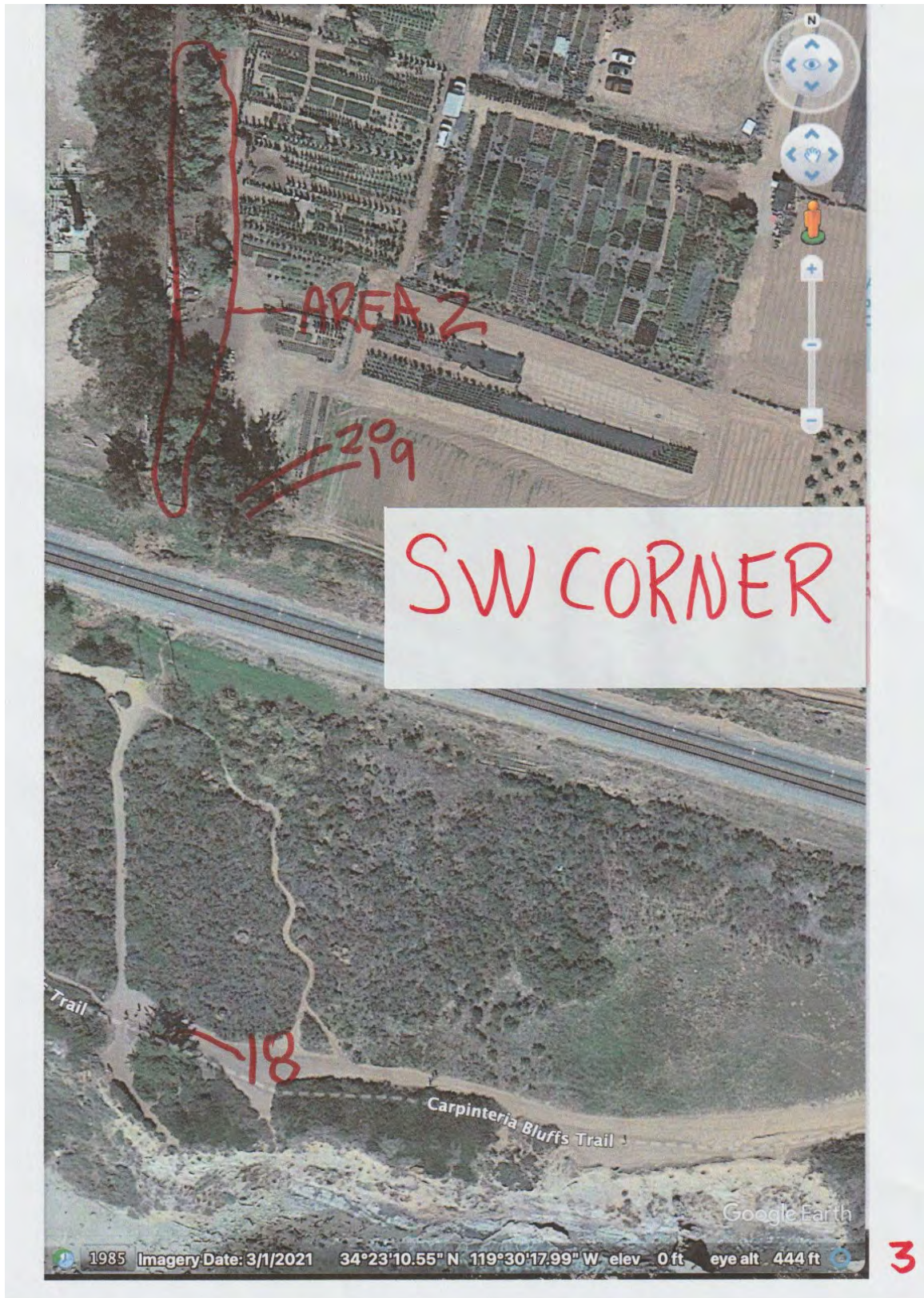


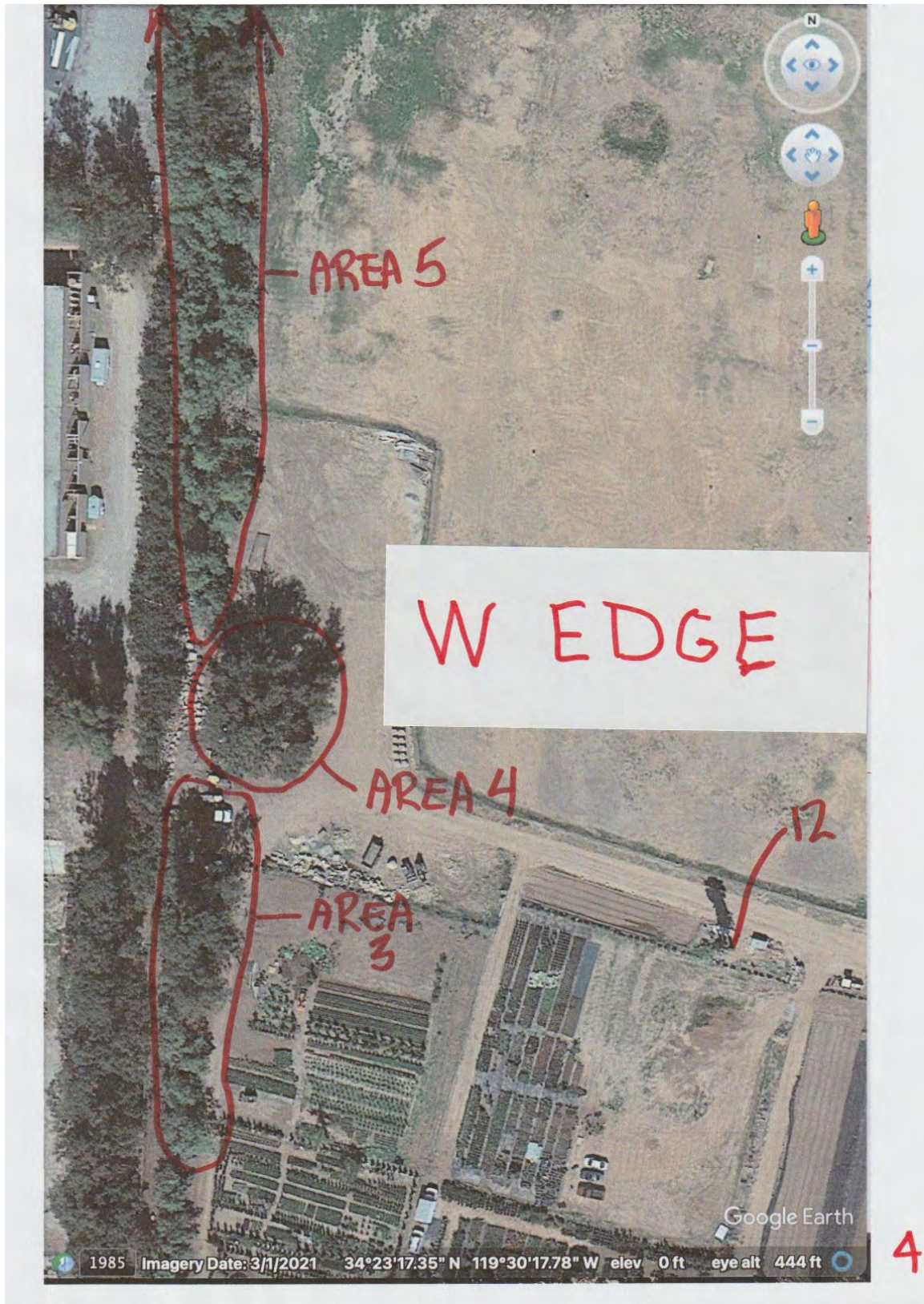
Topped Eucalyptus on W side, showing typical tag placement















FIELD INVENTORY DATA

No tag	Tree #	Species	Common name	DSH (inches)*	Condition	Map
	1	<i>Tamarix</i> sp.	Salt cedar	11,8,6,6+	poor	NE corner
	2	<i>Tamarix</i> sp.	Salt cedar	14,8,8,8+	poor	NE corner
	3	<i>Tamarix</i> sp.	Salt cedar	14,8,4+	poor	NE corner
	4	<i>Tamarix</i> sp.	Salt cedar	16,5+	poor	NE corner
	5	<i>Tamarix</i> sp.	Salt cedar	10,6,5,4+	poor	NE corner
	6	<i>Tamarix</i> sp.	Salt cedar	8,4+	fair	NE corner
	7	<i>Tamarix</i> sp.	Salt cedar	12	fair	NE corner
	8	<i>Tamarix</i> sp.	Salt cedar	9,5+	poor	NE corner
	9	<i>Tamarix</i> sp.	Salt cedar	18,8,8,6+	poor	NE corner
	10	<i>Acacia baileyana</i>	Bailey acacia	~13	good	SE corner
	11	<i>Hesperocyparis macrocarpa</i>	Monterey cypress	18 @ 6"	good	SE corner
	12	<i>Washingtonia robusta</i>	Mexican fan palm	16	good	W edge
	13	<i>Hesperocyparis macrocarpa</i>	Monterey cypress	10 @ 3'	fair	SE corner
	14	<i>Eucalyptus globulus</i>	Blue gum	28,22,19,9	poor	SE corner
	15	<i>Eucalyptus globulus</i>	Blue gum	10,8	very poor	SE corner
	16	<i>Eucalyptus globulus</i>	Blue gum	14	fair	SE corner
X	17	<i>Hesperocyparis macrocarpa</i>	Monterey cypress	~11 @ grade	very good	SE corner
	18	<i>Hesperocyparis macrocarpa</i>	Monterey cypress	16,16,8+	good	SW corner
	19	<i>Eucalyptus globulus</i>	Blue gum	~48,12,8	fair	SW corner
	20	<i>Eucalyptus globulus</i>	Blue gum	~38,12,12	fair	SW corner
	21	<i>Tamarix</i> sp.	Salt cedar	12,6+	poor	SW corner
	22	<i>Tamarix</i> sp.	Salt cedar	10+	poor	SW corner
	23	<i>Tamarix</i> sp.	Salt cedar	10,9+	poor	SW corner
	24	<i>Tamarix</i> sp.	Salt cedar	12+	poor	SW corner
	25	<i>Tamarix</i> sp.	Salt cedar	8,3	poor	SW corner
	26	<i>Tamarix</i> sp.	Salt cedar	15,4	poor	SW corner
	27	<i>Eucalyptus globulus</i>	Blue gum	12,8,7 @ 4'	poor	SW corner
	28	<i>Eucalyptus globulus</i>	Blue gum	10,9,8	poor	SW corner
	29	<i>Eucalyptus globulus</i>	Blue gum	16,15,12,11,10	poor	SW corner
	30	<i>Tamarix</i> sp.	Salt cedar	8,5,4+	poor	SW corner
	31	<i>Tamarix</i> sp.	Salt cedar	12,6+	poor	SW corner
	32	<i>Tamarix</i> sp.	Salt cedar	20,12,5,5+	poor	SW corner
	33	<i>Tamarix</i> sp.	Salt cedar	8,6+	poor	SW corner
	34	<i>Tamarix</i> sp.	Salt cedar	8,6,5,5+	poor	SW corner
	35	<i>Tamarix</i> sp.	Salt cedar	10,4+	poor	SW corner
	36	<i>Tamarix</i> sp.	Salt cedar	9,4,4	poor	SW corner
	37	<i>Tamarix</i> sp.	Salt cedar	16,15+	poor	W edge
	38	<i>Tamarix</i> sp.	Salt cedar	14,12,12+	poor	W edge

FIELD INVENTORY DATA

	39	<i>Tamarix</i> sp.	Salt cedar	16,8,4+	poor	W edge
	40	<i>Tamarix</i> sp.	Salt cedar	13,7,4+	poor	W edge
	41	<i>Eucalyptus globulus</i>	Blue gum	~38 @ 2'	fair	W edge
X	42	<i>Eucalyptus globulus</i>	Blue gum	~23	good	W edge
	43	<i>Eucalyptus globulus</i>	Blue gum	30,28,15,12	good	W edge
	44	<i>Eucalyptus globulus</i>	Blue gum	15,10,6,4	fair	W edge
	45	<i>Tamarix</i> sp.	Salt cedar	16	poor	W edge
	46	<i>Tamarix</i> sp.	Salt cedar	14,10,8,6+	poor	W edge
	47	<i>Eucalyptus globulus</i>	Blue gum	34 @ 3'	fair	W edge
	48	<i>Eucalyptus globulus</i>	Blue gum	18,10	fair	W edge
	49	<i>Eucalyptus globulus</i>	Blue gum	40,22 @ 3'	fair	W edge
	50	<i>Eucalyptus globulus</i>	Blue gum	17.5	fair	W edge
	51	<i>Eucalyptus globulus</i>	Blue gum	~24,16,14,14	fair	W edge
	52	<i>Eucalyptus globulus</i>	Blue gum	27.5,4	fair	W edge
	53	<i>Eucalyptus globulus</i>	Blue gum	18.5	fair	W edge
	54	<i>Eucalyptus globulus</i>	Blue gum	18	fair	W edge
	55	<i>Eucalyptus globulus</i>	Blue gum	16	poor	W edge
	56	<i>Eucalyptus globulus</i>	Blue gum	6,6,5	fair	W edge
	57	<i>Eucalyptus globulus</i>	Blue gum	17	fair	W edge
	58	<i>Eucalyptus globulus</i>	Blue gum	10	fair	W edge
	59	<i>Eucalyptus globulus</i>	Blue gum	10,9,8,8,8,6	poor	W edge & NW corner
	60	<i>Tamarix</i> sp.	Salt cedar	12,9,8+	poor	W edge & NW corner
	61	<i>Tamarix</i> sp.	Salt cedar	14,8+	poor	W edge & NW corner
	62	<i>Tamarix</i> sp.	Salt cedar	10,7,7+	poor	W edge & NW corner
	63	<i>Tamarix</i> sp.	Salt cedar	14,12,10,8+	poor	W edge & NW corner
	64	<i>Tamarix</i> sp.	Salt cedar	24,15+	poor	W edge & NW corner
	65	<i>Tamarix</i> sp.	Salt cedar	17	poor	W edge & NW corner
	66	<i>Tamarix</i> sp.	Salt cedar	15,8+	poor	W edge & NW corner
	67	<i>Tamarix</i> sp.	Salt cedar	12,10,5,4+	very poor	W edge & NW corner
	68	<i>Tamarix</i> sp.	Salt cedar	13+	poor	W edge & NW corner
	69	<i>Tamarix</i> sp.	Salt cedar	22 @ grade	poor	W edge & NW corner
	70	<i>Tamarix</i> sp.	Salt cedar	12	poor	W edge & NW corner
	71	<i>Tamarix</i> sp.	Salt cedar	13,12,6+	poor	W edge & NW corner
	72	<i>Tamarix</i> sp.	Salt cedar	9,9,8+	poor	W edge & NW corner
	73	<i>Tamarix</i> sp.	Salt cedar	12,9+	poor	W edge & NW corner
	74	<i>Tamarix</i> sp.	Salt cedar	12,6+	poor	W edge & NW corner
	75	<i>Tamarix</i> sp.	Salt cedar	8,7,4	poor	W edge & NW corner

FIELD INVENTORY DATA

	76	<i>Tamarix</i> sp.	Salt cedar	20,8,6,5,5+	poor	W edge & NW corner
	77	<i>Tamarix</i> sp.	Salt cedar	14,14,6+	poor	W edge & NW corner
	78	<i>Tamarix</i> sp.	Salt cedar	18,6,6	poor	W edge & NW corner
	79	<i>Tamarix</i> sp.	Salt cedar	10,7,4,4+	poor	W edge & NW corner
	80	<i>Tamarix</i> sp.	Salt cedar	30,9,8+	poor	W edge & NW corner
	81	<i>Tamarix</i> sp.	Salt cedar	11	poor	W edge & NW corner
	82	<i>Eucalyptus globulus</i>	Blue gum	14,12,9,8,7	poor	W edge & NW corner
	83	<i>Myoporum laetum</i>	Myoporum	9,2	poor	W edge & NW corner
	84	<i>Eucalyptus globulus</i>	Blue gum	~36 @ grade	poor	W edge & NW corner
	85	<i>Eucalyptus globulus</i>	Blue gum	~36 @ grade	poor	W edge & NW corner
	86	<i>Eucalyptus globulus</i>	Blue gum	14,10,9,9	poor	W edge & NW corner
	87	<i>Tamarix</i> sp.	Salt cedar	10+	poor	W edge & NW corner
X	88	<i>Eucalyptus globulus</i>	Blue gum	10,10,7	poor	W edge & NW corner
	89	<i>Tamarix</i> sp.	Salt cedar	15,12,6+	poor	W edge & NW corner
	90	<i>Tamarix</i> sp.	Salt cedar	10,9+	poor	W edge & NW corner
	91	<i>Tamarix</i> sp.	Salt cedar	16+	poor	W edge & NW corner
	92	<i>Tamarix</i> sp.	Salt cedar	8,8,6+	poor	W edge & NW corner
X	93	<i>Eucalyptus globulus</i>	Blue gum	~16,12,12	poor	W edge & NW corner
	94	<i>Tamarix</i> sp.	Salt cedar	16	poor	W edge & NW corner
	95	<i>Eucalyptus globulus</i>	Blue gum	12,12,8+	poor	W edge & NW corner
	96	<i>Eucalyptus globulus</i>	Blue gum	15,14,13+	poor	W edge & NW corner
	97	<i>Eucalyptus globulus</i>	Blue gum	11,8,6+	poor	W edge & NW corner
	98	<i>Tamarix</i> sp.	Salt cedar	17,8+	poor	W edge & NW corner
	99	<i>Tamarix</i> sp.	Salt cedar	10	poor	W edge & NW corner
	100	<i>Tamarix</i> sp.	Salt cedar	15,14,13,6+	poor	W edge & NW corner
	101	<i>Tamarix</i> sp.	Salt cedar	11,9,7+	poor	W edge & NW corner
	102	<i>Tamarix</i> sp.	Salt cedar	8,7,6+	poor	W edge & NW corner
	103	<i>Tamarix</i> sp.	Salt cedar	10,9,8+	poor	W edge & NW corner
	104	<i>Tamarix</i> sp.	Salt cedar	10,7,6,6,6+	poor	W edge & NW corner
	105	<i>Tamarix</i> sp.	Salt cedar	12	poor	W edge & NW corner
	106	<i>Tamarix</i> sp.	Salt cedar	14,6+	poor	W edge & NW corner
	107	<i>Tamarix</i> sp.	Salt cedar	10,10,8,8+	poor	W edge & NW corner
	108	<i>Tamarix</i> sp.	Salt cedar	9,7,6,6,6+	poor	W edge & NW corner
	109	<i>Tamarix</i> sp.	Salt cedar	10,6,5+	poor	W edge & NW corner
	110	<i>Tamarix</i> sp.	Salt cedar	14,10	poor	W edge & NW corner
	111	<i>Tamarix</i> sp.	Salt cedar	10+	poor	W edge & NW corner
	112	<i>Tamarix</i> sp.	Salt cedar	10,8,7,6+	poor	W edge & NW corner

FIELD INVENTORY DATA

	113	<i>Tamarix</i> sp.	Salt cedar	8,6,6+	poor	W edge & NW corner
	114	<i>Tamarix</i> sp.	Salt cedar	15,5,4,4+	poor	W edge & NW corner
	115	<i>Tamarix</i> sp.	Salt cedar	9,8,6,5,4,4+	poor	W edge & NW corner
	116	<i>Tamarix</i> sp.	Salt cedar	10+	poor	W edge & NW corner
	117	<i>Tamarix</i> sp.	Salt cedar	8+	poor	W edge & NW corner
	118	<i>Tamarix</i> sp.	Salt cedar	10,8,7,6,6+	poor	W edge & NW corner
	119	<i>Tamarix</i> sp.	Salt cedar	8,5+	poor	W edge & NW corner
	120	<i>Tamarix</i> sp.	Salt cedar	10.7+	poor	W edge & NW corner
	121	<i>Tamarix</i> sp.	Salt cedar	15+	poor	W edge & NW corner
	122	<i>Tamarix</i> sp.	Salt cedar	14,4+	poor	W edge & NW corner
	123	<i>Tamarix</i> sp.	Salt cedar	14,10,8+	poor	W edge & NW corner
	124	<i>Tamarix</i> sp.	Salt cedar	18,16,13,10,8,8+	poor	W edge & NW corner
	125	<i>Tamarix</i> sp.	Salt cedar	12	poor	W edge & NW corner
	126	<i>Tamarix</i> sp.	Salt cedar	8,7,6,4+	poor	W edge & NW corner
	127	<i>Platanus racemosa</i>	Western sycamore	18	good	NW corner
	128	<i>Platanus racemosa</i>	Western sycamore	15	good	NW corner
	129	<i>Platanus racemosa</i>	Western sycamore	17 @ 3'	good	NW corner
	130	<i>Arbutus 'Marina'</i>	Marina strawberry tree	6	poor	NW corner
	131	<i>Arbutus 'Marina'</i>	Marina strawberry tree	9	poor	NW corner
	132	<i>Prunus persica</i>	Peach	3,3+	very poor	NW corner
	133	<i>Platanus racemosa</i>	Western sycamore	17.5, 17.5	good	NW corner
	134	<i>Fraxinus uhdei</i>	Shamel ash	16,16,11	good	NE corner
	135	<i>Platanus racemosa</i>	Western sycamore	16.5	good	NE corner
	136	<i>Platanus racemosa</i>	Western sycamore	16	good	NE corner
	137	<i>Platanus racemosa</i>	Western sycamore	15.5, 9.5	good	NE corner
	138	<i>Platanus racemosa</i>	Western sycamore	12.5 @ 3'	good	NE corner
	139	<i>Washingtonia filifera</i>	California fan palm	26.5	good	NE corner
	140	<i>Platanus racemosa</i>	Western sycamore	18	good	NE corner
X	141	<i>Lyonothamnus floribundus</i>	Catalina ironwood	~8	fair	NE corner
X	142	<i>Juniperus chinensis 'Torulosa'</i>	Hollywood juniper	10 @ grade	good	NE corner
X	143	<i>Juniperus chinensis 'Torulosa'</i>	Hollywood juniper	9 @ grade	good	NE corner
X	144	<i>Lyonothamnus floribundus</i>	Catalina ironwood	12 @ grade	fair	NE corner

X Tree was not tagged due to inaccessibility
--

Location	Comments
area 1	May be off property
area 1	May be off property
area 1	May be off property
area 1	May be off property
area 1	May be off property
area 1	May be off property
area 1	May be off property
area 1	May be off property
area 1	May be off property
center E side	
center	
center	
S of RR tracks	May be off property
S of RR tracks	
S of RR tracks	
S of RR tracks	
S of RR tracks	
near bluffs	May be off property
N of RR tracks	
N of RR tracks	
area 2	
area 2	
area 2	
area 2	
area 2	
area 2	
area 2	
area 2	
area 2	
area 2	
area 2	
area 2	
area 2	
area 2	
area 2	
area 2	
area 2	
area 3	
area 3	

[illegible]

area 5	
area 5	
area 5	
area 5	
area 5	
area 5	
area 5	Topped, property line tree
area 5	
area 5	
area 5	
area 5	Topped, property line tree
area 5	
area 5	Topped
area 5	
area 5	
area 5	
area 5	
area 5	Topped, property line tree
area 5	
area 5	
area 5	Topped, property line tree
area 5	Topped, property line tree
area 5	
area 5	
area 5	
area 5	
area 5	
area 5	
area 5	
area 5	
area 5	
area 5	
area 5	
area 5	
area 5	
area 5	
area 5	
area 5	
area 5	May be off property
area 5	

area 5	
area 5	May be off property
area 5	May be off property
area 5	
area 5	
area 5	May be off property
area 5	
area 5	
area 5	
area 5	May be off property
area 5	May be off property
area 5	May be off property
area 5	
area 5	May be off property
Carpinteria Ave.	
Carpinteria Ave.	
Carpinteria Ave.	
Carpinteria Ave.	
Carpinteria Ave.	
Carpinteria Ave.	
Carpinteria Ave.	
Carpinteria Ave.	
Carpinteria Ave.	
Carpinteria Ave.	
Carpinteria Ave.	
Carpinteria Ave.	
N of office	
W of office	
SW of office	
E of office	
E of office	
E of office	