

## **APPENDIX I**

### **DESCRIPTION OF FACILITIES NOT INCLUDED IN PROJECT ACTIVITIES**

The following areas within and adjacent to the onshore and offshore Project site(s) are not included in the proposed Project because they are owned and/or regulated by other parties and are therefore the responsibility of those parties (Figure I-1). However, a description of these facilities may be pertinent to responsible agencies or other persons reviewing the Project as part of the regional setting and site considerations. As such, a brief discussion of other notable area features is provided below.

#### **1.1 ONSHORE**

##### **1.1.1 Oil and Gas Development/Features**

###### **1.1.1.1 Natural Hydrocarbon Seeps**

Naturally occurring petroleum hydrocarbon seeps along the coast of Santa Barbara discharge significant quantities of oil and tar to the nearshore waters of the Santa Barbara Channel. The world's largest natural offshore oil and gas seep has been documented off Coal Oil Point in Goleta. Natural oil seeps are also abundant along the bluffs and rocky intertidal areas in Carpinteria. Specifically, bedrock materials of the Monterey Formation in the Project vicinity are known and documented to contain naturally occurring petroleum hydrocarbons, which are present below the Project Site at Carpinteria Tar Pits Park (also known as the Carpinteria Oil Seeps). Additionally, a number of seep areas are present within the boundaries of the onshore Project site, most notably within the Buffer Zone Area, MSRC Area, Main Plant Area, and Pier Parking Lot Area. A current summary of the surface expressions of natural hydrocarbon seeps located at the Project Site has been included in the Executive Summary Interim Remedial Action Plan (IRAP) mapping provided in Appendix B and is also shown in Figure I-1 below.

###### **1.1.1.2 Asphalt Mine/Former Carpinteria Burn Dump Area**

With the presence of active oil seeps in the area, a portion of the Pier Parking Lot Area was previously used as an open-pit asphalt mine from around 1912 until the mid-1930s, which was known as the Higgins Asphalt Mine. The former asphalt pits began to be used by the County of Santa Barbara as a burn dump and landfill beginning in the 1930s.

The former Carpinteria Burn Dump site is estimated to cover an approximately 5.5-acre area encompassing the western portion of the Casitas Pier parking lot parcel and the eastern portion of the City of Carpinteria's Tar Pits Park property. The burn dump was operated by the County of Santa Barbara under a lease from the landowner until January 1957 when the lease was terminated by the landowner so that it could be used by the Atkinson Company, who at that time was building the Rincon Island for Richfield Oil Company located near La Conchita. In 1959, Standard Oil Company (Chevron) and Exxon purchased the parcel from the landowner.

The County of Santa Barbara Environmental Health Services (SBEHS), the local enforcement agency (LEA) for evaluating and remediating burn dump sites, identifies the former burn dump site as Site # 742, Carpinteria City Dump, Dump Road, Carpinteria. The County of Santa Barbara retains financial responsibility for the management and regulatory compliance of the former Carpinteria Burn Dump.

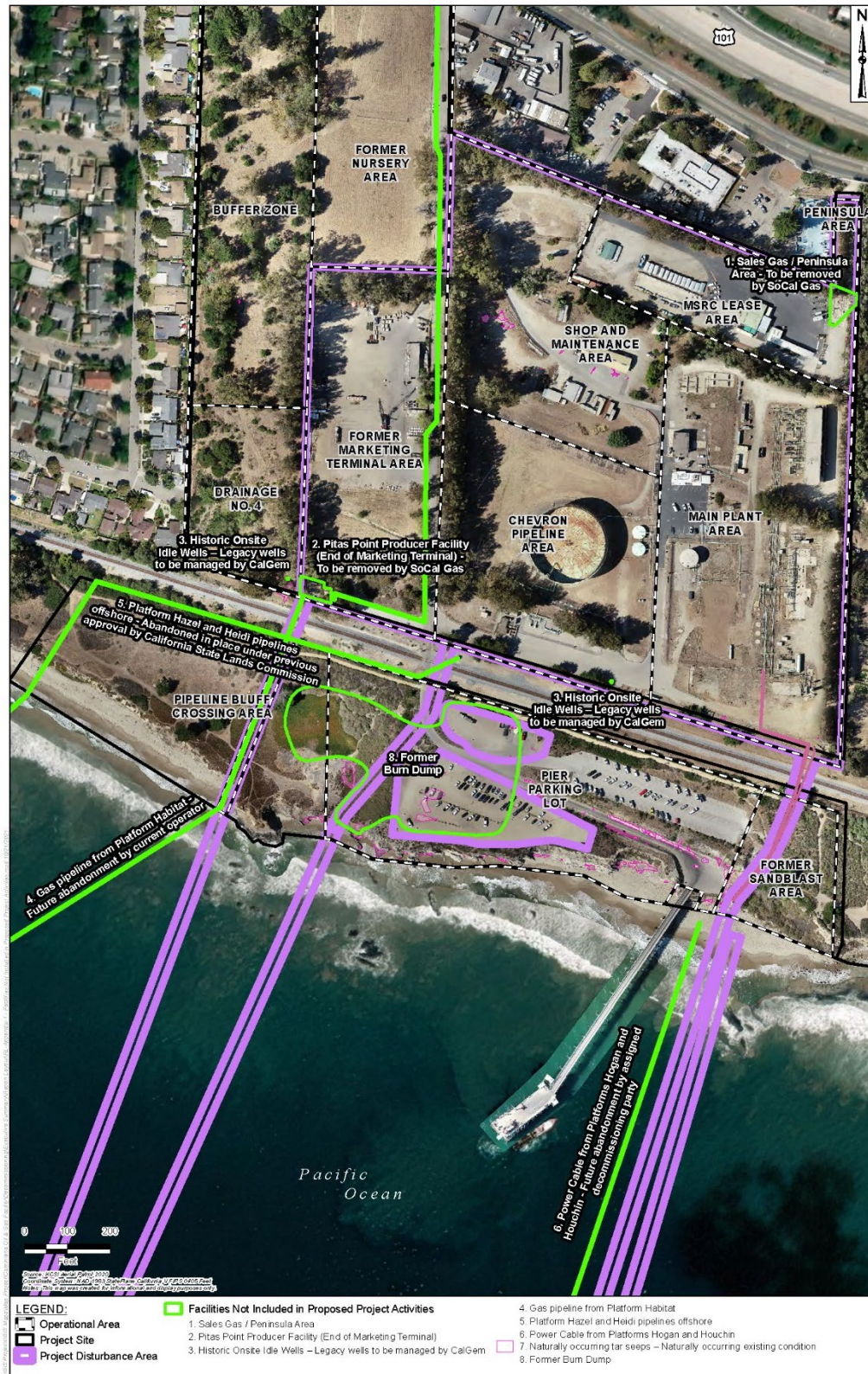


Figure I-1 Facilities Not Included in Project Activities

### 1.1.1.3 Idled and Plugged/Abandoned Oil and Gas Wells

Based on a review of available records, including the California Geologic Energy Management Division (CalGEM), provided below are descriptions of historic idled or plugged oil wells documented or suspected to be located at the Carpinteria Oil and Gas Processing Facility properties. As these wells have been previously plugged or are now idle, they are now the responsibility of CalGEM.

- P.C. Higgins No. 1 – CalGEM refers to this well as American Petroleum Institute (API) Well No. 0408304644. This idle well, also referred to as the “hand dug well”, was reportedly hand dug in 1913 to a total depth of approximately 350 feet and is located in the southeast corner of Drainage Area No. 4. The well vault has a metal cover. The well is located adjacent to an active natural petroleum hydrocarbon surface seep. It is Chevron’s understanding that this well is an idle Legacy Well and as mentioned above, is the responsibility of CalGEM.
- Carpinteria Community Well No. 1 – According to CalGEM, API Well No. 0408304313 is an idle well drilled in 1924 to a total depth of approximately 1,382 feet. This well is located adjacent the southern property boundary south of the Chevron Pipeline Area. The well vault has a well-defined concrete surface expression, a wooden cover, as well as covered with a plastic tarp. It is Chevron’s understanding that this well is an idle Legacy Well and as mentioned above, is the responsibility of CalGEM.
- Caitlin Fletcher No. 1 – According to CalGEM, this well is a plugged dry hole and is referred to as API Well No. 0408304297. Drilled and abandoned in 1951, Caitlin-Fletcher No.1 was reportedly drilled to a total depth of approximately 1,562 feet and is suspected to be located in the Tank 861 berm area immediately southeast of Tank 861.
- Thornbury-Community Well Number: 1 - According to CalGEM, this well is a plugged dry hole and is referred to as API Well No. API Well No. 0428304313. There are no available drilling or abandonment records, but based on the CalGEM map, this plugged well is suspected to be located within the Oil and Gas Facility Main Plant Area.
- Thornbury-Community Well No. 3 - According to CalGEM, this well is a plugged dry hole and is referred to as API Well No. 0408304315. Drilled and abandoned in 1949, Thornbury-Community Well No. 3 was reportedly drilled to a total depth of approximately 1,807 feet and based on the CalGEM map is suspected to be located at the southern portion of the Main Plant Area.
- Nugent No. 1 – According to CalGEM, this well is a plugged dry hole and is referred to as API Well No. 0408304327. Drilled and abandoned in 1925, Nugent No. 1 was reportedly drilled to a total depth of approximately 3,670 feet and based on the CalGEM map is suspected to be located at the Buffer Zone Area.
- Nugent No. 2 - According to CalGEM, this well is a plugged dry hole and is referred to as API Well No. 0408304328. Drilled in 1925 and abandoned in 1926, Nugent No. 2 was reportedly drilled to a total depth of approximately 4,567 feet and based on the CalGEM map is suspected to be located at the Buffer Zone Area.

### **1.1.2 Gas Odorization Facilities**

#### **1.1.2.1 Pitas Point Odorizing Facility**

An onshore gas terminal known as the Pitas Point Odorizing Facility is located just south of the Marketing Terminal Area. The facility is owned by Sempra Resources (parent company of SoCal Gas Company) and serves to odorize and meter gas fed in by a pipeline from Platform Habitat. The facility is no longer in use and will be taken out of service and appropriately abandoned by SoCal Gas.

#### **1.1.2.2 Carpinteria Gas Odorizing Facility**

The Carpinteria Gas Odorizing Facility is located near the northeastern corner of the project site. This facility is also owned by Sempra Resources, and serves to odorize gas leaving the oil and gas plant and entering a gas supply main in the Carpinteria Avenue right-of-way. The facility is no longer in use and will be taken out of service and appropriately abandoned by SoCal Gas.

### **1.1.3 Onsite Easements**

Several easements exist through the Project site for underground oil, gas, water, sewage, and communication lines. Above ground easements also exist for above ground utilities (communications, electricity) and an electric substation located within the oil and gas plant area. A 20-foot-wide easement has been granted to the City of Carpinteria for a bicycle path along the southern edge of the railroad.

### **1.1.4 Railroad Drainage Ditch Area**

The Railroad Drainage Ditch Area is located immediately south of the Concha Loma residential development to the southwest of the Oil and Gas Processing Facility property and passes through APN 001-170-020. The Drainage Ditch Area is a former investigation corridor that leads from Drainage Area No. 4 westward along the UPRR right-of-way, and then crosses the right-of-way leading southward through the parcel and ends at an access path to Tar Pits Park/beach. This area does not require any further assessment and is therefore not included as part of the proposed Project.

### **1.1.5 Casitas Pier**

The Casitas Pier was constructed in 1966 to support offshore oil and gas operations. The pier is approximately 700 feet long and the end of the pier consists of a 90-foot by 90-foot deck area which functions as a staging area for loading and unloading cargo and passengers to and from marine vessels. The pier is primarily located on intertidal and submerged lands owned by the City.

## **1.2 OFFSHORE**

Historically, the Carpinteria Oil and Gas Processing Facility has supported a number of offshore production and transport related facilities. These facilities have included Chevron's State Waters production platforms (Hope, Heidi, Hazel, and Hilda), a marketing marine terminal, a marine outfall, and the Outer Continental Shelf (OCS) production from Platforms Gail and Grace.

Additionally, several non-Chevron pipelines and power cables also make landfall at the Project Site.

Although located within the vicinity of the Project site, the following nearshore/offshore facilities have been previously abandoned or are not owned or operated by Chevron and will not be included as part of the proposed Project decommissioning activities.

### **1.2.1 Platforms Hazel and Hilda Pipeline Bundle to Shore**

The former Platforms Hazel and Hilda pipeline bundle includes two, 8-inch diameter and one, 6-inch diameter abandoned pipelines that come from offshore, across the beach near the western extent of the Project area; then up through the bluffs and ultimately parallel the UPRR tracks into the southern boundary of the onshore Facility. A 36-inch diameter corrugated metal vault (CMV) formerly utilized to access these lines is located at the edge of the bluffs. These facilities were previously abandoned in place as approved by the California State Lands Commission and City of Carpinteria when the 4H Platforms were decommissioned.

### **1.2.2 PACOPS Power Cable**

Within State waters of PRC 3150 leading into PRC 3133, a 19,523-foot-long submarine power cable from Platform Hogan installed in 1967 and operated by Pacific Operators Offshore, LLC (PACOPS) comes ashore at latitude 34°23'07.972" and longitude 119°30'20.429", which is located east of the Casitas Pier.

### **1.2.3 Idle Platform Habitat 12-inch Gas Pipeline to Shore**

A 12-inch diameter gas pipeline from Platform Habitat runs primarily through PRC 3150 and then through PRC 3133 within a 100-foot corridor as it comes to shore located at the SoCal Gas Pitas Point Odorizing Facility located on the southwestern boundary of the Carpinteria Oil and Gas Processing Facility property.

### **1.2.4 Other Marine Facilities**

Although a significant number of nearshore/offshore features have been positively identified through mapping and field surveys; there are a number of additional features within the vicinity of the Project Site that are unknown in terms of exact location, use, or final disposition and are not included as part of the proposed Project. These features include (but are not limited to) the following:

- Historical and current navigational charts show a second pipeline alignment coming from Platform Habitat to shore, just east of the current landfall. It is not known at this time if this pipeline has been abandoned or still exists, or what its original use was for;
- Abandoned power cable shown from Platform Hogan;
- A 2-inch steel pipeline extending out of the coastal bluff located east of the power cables and pipelines east of Casitas Pier; and
- A 3-inch steel pipeline end flush with the coastal bluff adjacent the 2-inch steel pipeline.